

ARCHITECTURAL FLOOR PLAN

DOOR SCHEDULE

SYM	QTY	SIZE	THK	DESCRIPTION	REMARKS
(A)	2	--	--	EXISTING DOOR	VERIFY THRESHOLD - SEE DETAIL 'BB' BELOW
(B)	3	3'-0" x 7'-0"		SOLID CORE	
(C)	1	3'-0" x 7'-0"	1 3/4"	SOLID CORE	LCN SLIMLINE AUTO-CLOSER / SATIN CHROME
(D)	1	3'-0" x 7'-0"	1 3/4"	SOLID CORE	w/ GLASS - SEE ELEVATION 'AA' BELOW
(E)	1	3'-0" x 7'-0"	1 3/4"	SOLID CORE	w/ LAMINATED ACOUSTICAL GLASS - SEE ELEVATION 'AA' BELOW
(F)	1	2'-2" x 7'-0"	1 3/4"	SOLID CORE	
(G)	1	2'-0" x 7'-0"	1 3/4"	SOLID CORE	
(H)	1	1'-8" x 7'-0"	1 3/4"	SOLID CORE	
(J)	1	3'-0" DOOR w/ 2'-8" x 7'-0" CLEAR OPENING	1 3/8"	SOLID CORE POCKET DOOR	NOTE 1 3/8" DOOR THICKNESS - DOOR TO EXTEND 3" INTO OPENING (w/ 32" CLEAR) - PROVIDE H.C. ACCESSIBLE PULLS FROM TRIMCOY #1194-2 (OR EQUAL) w/ GLASS - SEE ELEVATION 'AA' BELOW

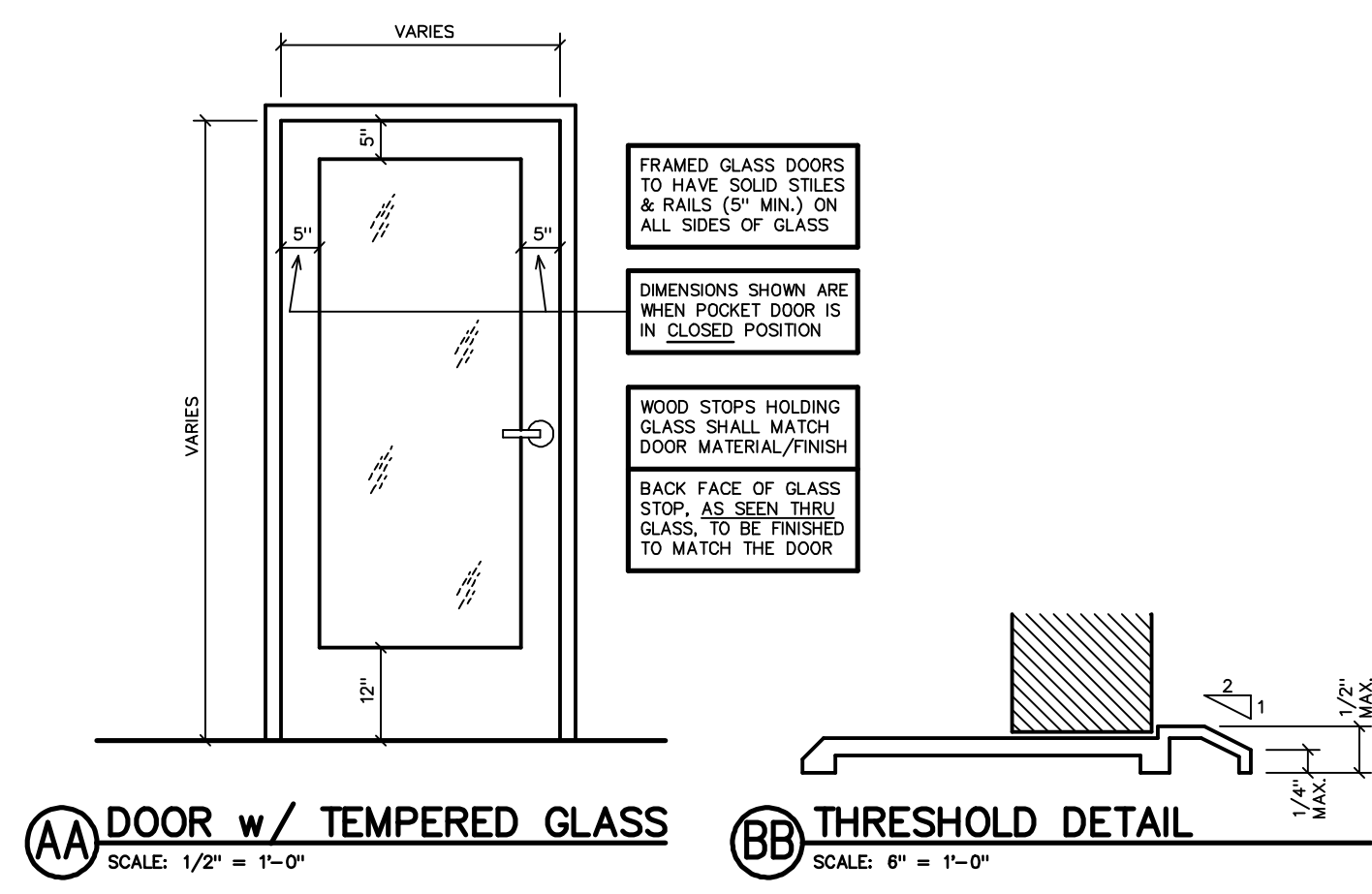
DOORS & FRAMES: • ALL NEW INTERIOR DOORS ARE TO BE FLUSH PARTICLEBOARD CORE (EXCEPT AS NOTED BELOW FOR FRAMED GLASS DOORS)

- WITH PAINT GRADE BIRCH VENEER (FINISH AS SPECIFIED BY INTERIOR DESIGNER)
- ALUMINUM DOOR & WINDOW FRAMES (VERIFY FINISH) AS MANUFACTURED BY WESTERN INTEGRATED MATERIALS (962) 834-2823
- ALL DOOR & WINDOW FRAMES TO BE FINISHED WITH 2" WIDE FACE TRIM

HARDWARE:

- PASSAGE LATCHES - SCHLAGE NEPTUNE (AL' SERIES-LEVER TYPE) #626 SATIN CHROME FINISH
- HINGES - 1 1/2" PAIR 'MCKINNEY' 4 1/2" BUTTS
- FURNISH BALL-TYPE WALL BUMPERS (TYP., AS DIRECTED), WHERE CONDITIONS DICTATE OTHERWISE, PROVIDE FLOOR STOPS AS DIRECTED BY ARCHITECT.
- FURNISH ACOUSTICAL WEATHER STRIPPING ON DOORS TO ROOMS 4, 7, 18, 19, 20 & 22
- FURNISH PRIVACY LOOKS FOR ROOMS 8, 19 & 22
- PROVIDE EXTERIOR GRADE LOCKS (MATCH BUILDING STANDARD) ON ALL TYPE 'A' DOORS
- ON ACCESSIBLE DOORS AT TOILET ROOMS, PROVIDE 1/4" THICK SYMBOL, AS SPECIFIED BELOW. SYMBOL SHALL BE OF A COLOR (GRAY OR AS SPECIFIED BY INTERIOR DESIGNER) WHICH IS DISTINCTLY DIFFERENT FROM THAT OF THE DOOR. CENTER OF SYMBOL SHALL BE CENTERED ON THE DOOR AT A HEIGHT OF 60". ALSO PROVIDE A WALL SIGN ON THE STRIKE SIDE OF THE DOOR, IDENTIFYING THE ROOM AS AN ACCESSIBLE UNisex TOILET ROOM. SIGN INFORMATION SHALL BE PROVIDED IN RAISED LETTERS AS WELL AS BRAILLE. MOUNT SIGN SUCH THAT ENTIRE SIGN IS BETWEEN 48" AND 60" ABOVE FINISHED FLOOR. ALL SYMBOLS, SIGNS & THEIR INSTALLATION SHALL BE PER CALIFORNIA BUILDING CODE, SECTIONS 1115B.6 & 1117B.5.7.

ROOM #19 - MEN'S TOILET EQUILATERAL TRIANGLE w/ 12" SIDES & VERTEX UP
ROOM #22 - WOMEN'S TOILET CIRCLE w/ 12" DIAMETER



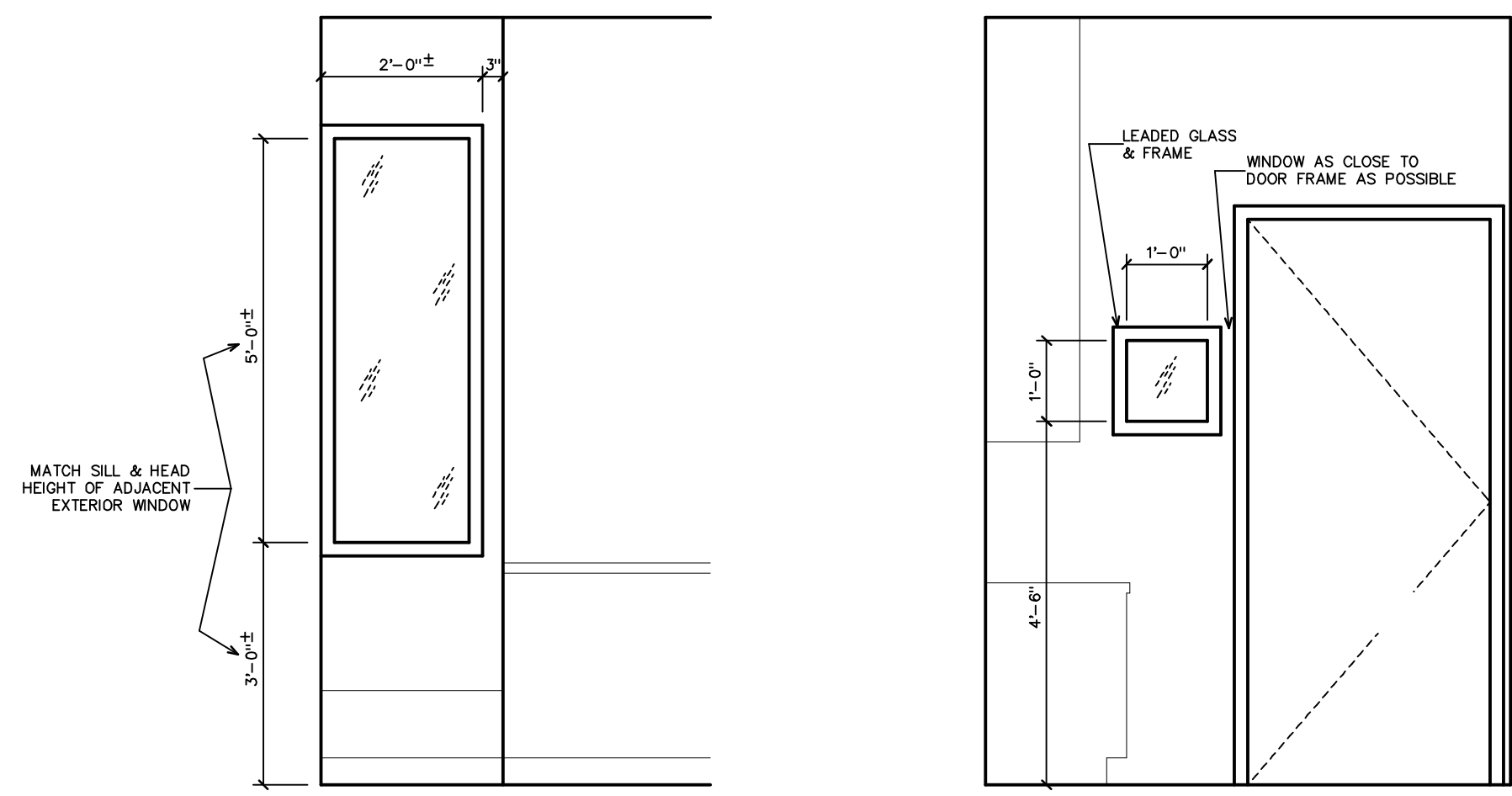
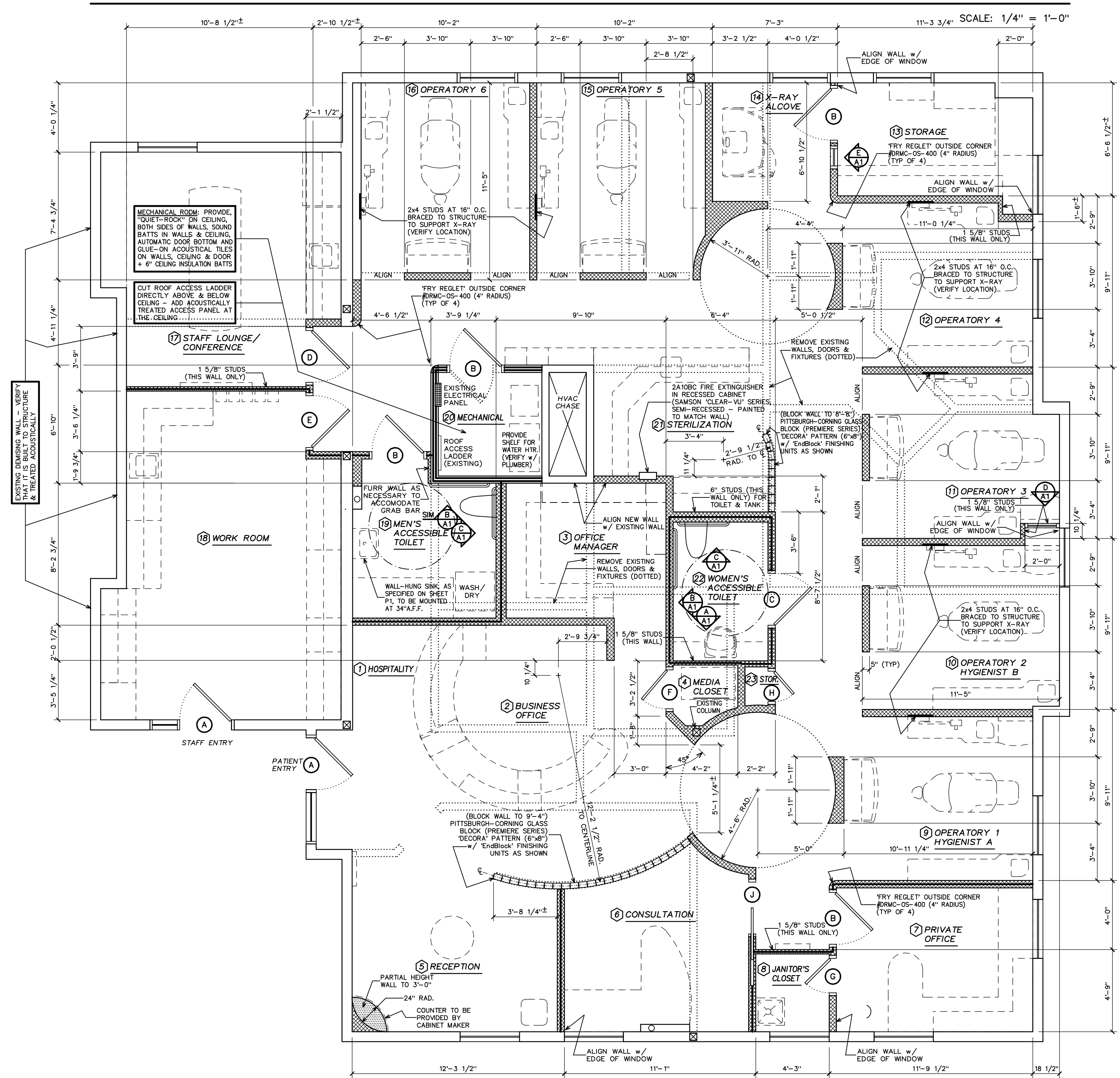
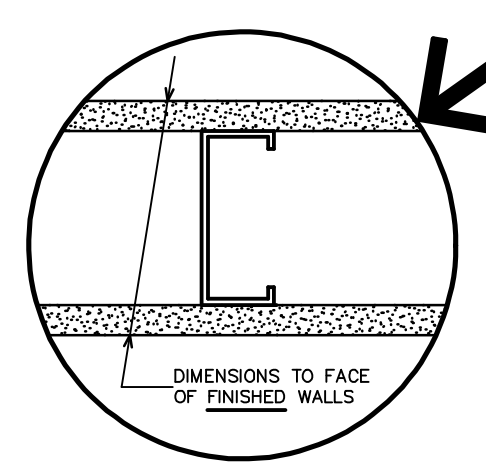
AA DOOR w/ TEMPERED GLASS SCALE: 1/2" = 1'-0"
BB THRESHOLD DETAIL SCALE: 6" = 1'-0"

SYMBOLS & ABBREVIATIONS

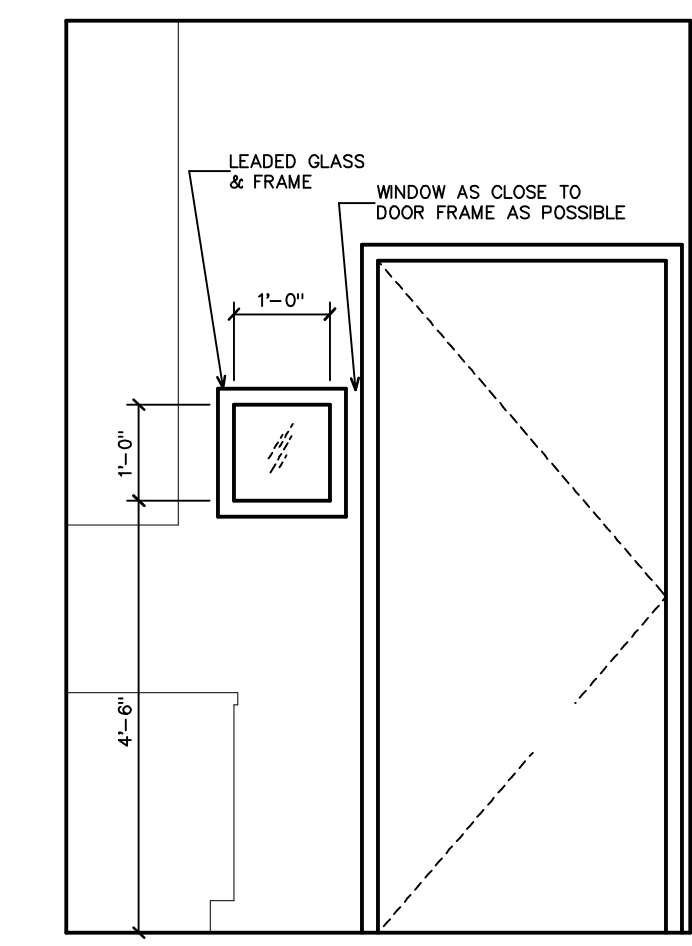
	EXISTING WALLS TO REMAIN
	EXISTING WALLS, DOORS, FIXTURES, ETC. TO BE REMOVED
	EXISTING WALL FRAMING TO REMAIN w/ ACOUSTICAL SHEATHING & SOUND ATTENUATION BLANKETS ADDED AS SPECIFIED BELOW
	NEW FULL HEIGHT (2" ABOVE CLG.) PARTITIONS - 2x4 WOOD STUDS @ 16" O.C. (U.O.N.) SHEATH WITH 5/8" GYPSUM BOARD. (METAL STUDS AS ALTERNATE)
	NEW PARTIAL HEIGHT PARTITIONS - SAME AS ABOVE. SEE ELEVATIONS.
	NEW FULL HEIGHT ACOUSTICAL PARTITIONS - SAME AS ABOVE, EXCEPT ONE SIDE USING "QUIET-ROCK QR-530" (5/8" ACOUSTICAL SHEETROCK)** FILL VOIDS w/ "THERMAFIBER" 3"-CREASED SOUND ATTENUATION FIRE BLANKETS. ** (AT CURVED WALLS, USE 1/4" SHEET ROCK OVER 1/2" SOUNDBOARD)**
	NEW FULL HEIGHT DBL. ACOUSTICAL PARTITIONS - SAME AS ABOVE, EXCEPT BOTH SIDES USING "QUIET-ROCK QR-530" (5/8" ACOUSTICAL SHEETROCK). FILL VOIDS w/ "THERMAFIBER" 3"-CREASED SOUND ATTENUATION FIRE BLANKETS. ADD 6" FIBERGLAS BATTS ABOVE FINISHED CEILING - SEE SHEET A2.
	CABINETRY, FURNITURE OR EQUIPMENT NOT A PART OF THIS CONTRACT
	DIRECTION OF VIEW
	ELEVATION DESIGNATION
	SHEET NUMBER
	DOOR SYMBOL - SEE DOOR SCHEDULE, THIS SHEET
N.I.C.	NOT IN CONTRACT
A.F.F.	ABOVE FINISHED FLOOR
U.N.O.	UNLESS NOTED OTHERWISE

COORDINATE ALL DRAWINGS REGARDING RECESSED ITEMS

U.N.O. - DIMENSIONS ARE TO FACE OF FINISHED WALLS



D WINDOW BETWEEN OPERATORIES #2 & 3 SCALE: 1/2" = 1'-0"

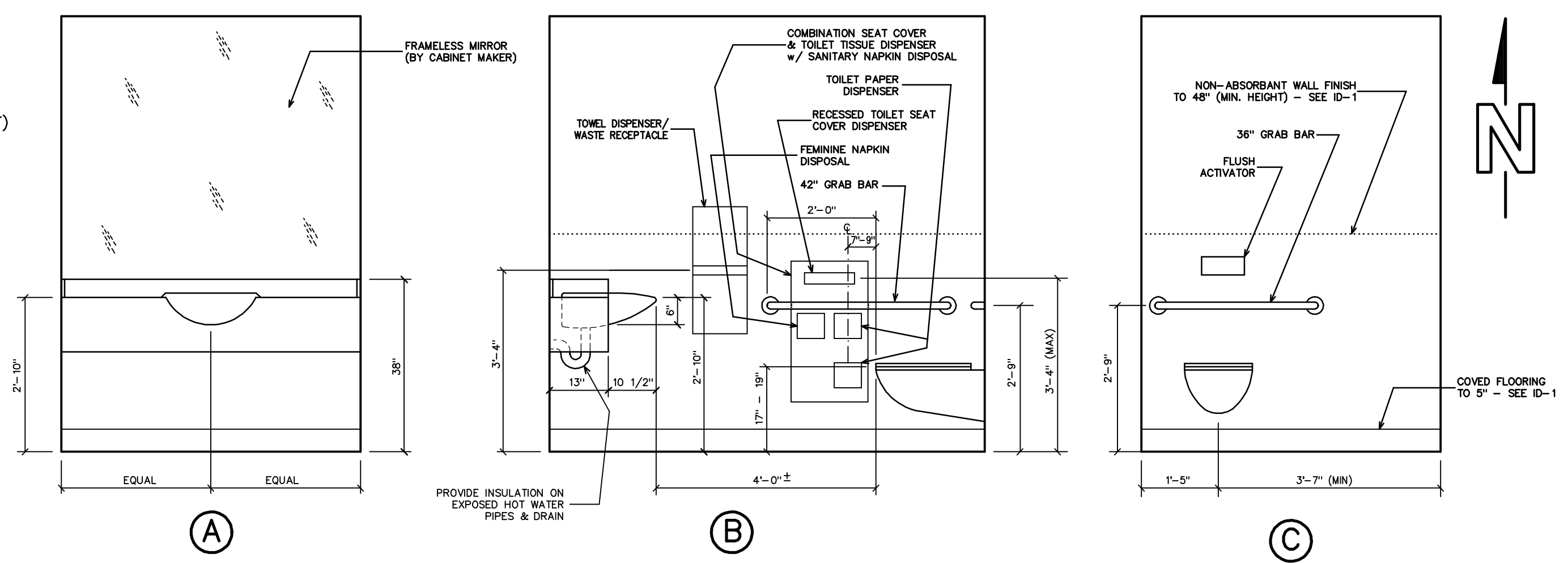


E VIEW WINDOW OUTSIDE X-RAY ALCOVE SCALE: 1/2" = 1'-0"

ACCESSIBLE TOILET ROOM ELEVATIONS

SCALE: 1/2" = 1'-0"

- WATER CLOSET: TOTO WALL-HUNG TOILET #CT-418-FG (1.6/0.9 GPF)
- LAVATORY: AMERICAN STANDARD 'MEZZO' SINK #9960.001 w/ SINGLE LEVER FAUCET
- GRAB BARS: BOBRICK SERIES #5806
- ACCESSORIES: TOWEL DISPENSER/WASTE RECEPTACLE: BOBRICK #B-4369
- COMBINATION SEAT COVER/TOILET PAPER DISPENSER w/ SANITARY NAPKIN DISPOSAL: BOBRICK #B-3574



A **B** **C**