

### MECHANICAL SYSTEM NOTES

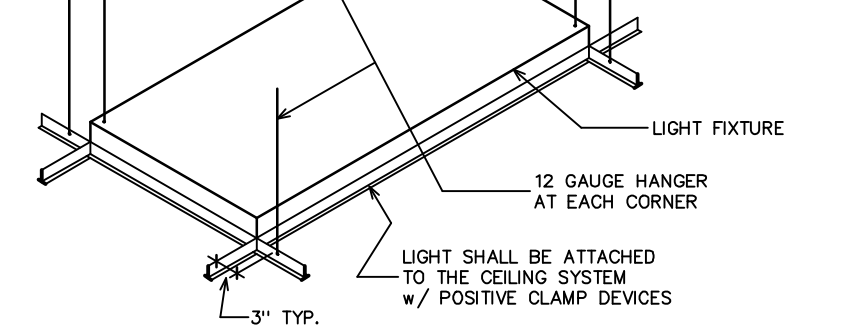
- A NEW SUPPLY AND RETURN HVAC SYSTEM SHALL BE DESIGNED AND CONNECTED TO THE EXISTING BUILDING SYSTEM.
- A SHOP DRAWING SHOWING THE PROPOSED LOCATION OF ALL DIFFUSERS, EXHAUST FANS, RETURNS (INDIVIDUAL RETURNS IN EACH ROOM OR SPACE - NOT A SINGLE CENTRAL RETURN), ACCESSIBLE CONTROLS, CONTROL WIRING, ETC. SHALL BE SUBMITTED TO THE ARCHITECTS FOR THEIR APPROVAL WITHIN 2 WEEKS OF THE TIME THE CONSTRUCTION CONTRACT IS AWARDED. (VERIFY FINAL LIGHTING LAYOUT) ARCHITECT SHALL HAVE THE RIGHT TO HAVE THE MECH. SUB-CONTRACTOR MAKE ANY FIELD CHANGES THEY DEEM NECESSARY IF THEY HAVE NOT HAD AN OPPORTUNITY TO REVIEW THE SHOP DRAWINGS.
- ALL DUCTWORK TO BE INSULATED AND SYSTEM SHALL INCLUDE OTHER MANDATORY FEATURES FOR MECHANICAL ENERGY COMPLIANCE.
- THE CONTRACTOR SHALL VISIT THE SITE SO AS TO EVALUATE THE EXISTING CONDITIONS AND DETERMINE WHAT WORK WILL BE NECESSARY IN ORDER TO PROVIDE A COMPLETE AND EFFECTIVELY ZONED HVAC SYSTEM.
- THE REMAINDER OF THE HVAC SYSTEM: THE INSULATED SUPPLY AND RETURN DUCTS, CEILING DIFFUSERS, CONTROL SYSTEM WITH A 7-DAY CLOCK AND THE EXHAUST FANS ARE A PART OF THIS CONTRACT. FURNISH A SEPARATE BID TO INCLUDE ALL OF THE ELEMENTS TO COMPLETE THE HVAC SYSTEM.
- A DESCRIPTION OF THE PROPOSED SYSTEM SHALL BE SUBMITTED WITH THE BID SO AS TO BE EVALUATED FOR ITS PERFORMANCE CAPABILITIES AND FOR COMPARISON WITH OTHER PROPOSED SYSTEMS.
- THE CONTRACT SHALL INCLUDE TESTING & BALANCING OF THE SYSTEM.
- EXHAUST FAN SCHEDULE:  
ROOM FANS (w/ BACKDRIFT DAMPERS)  
4, 8, 17, 18(2), PANASONIC #FV-15VQ4 (150 CFM)  
19, 20, 21 & 22

[FAN AT ROOM #20 TO BE INTERCONNECTED w/ COMPRESSOR SO AS TO SWITCH ON AUTOMATICALLY WHENEVER COMPRESSOR IS OPERATING.]

NOTE: IN MECHANICAL ROOM (#20) FURNISH A 36 SQ. IN. THRU-THE-ROOF METAL DUCT, STARTING AT 24" A.F.F. AND NEAR THE COMPRESSOR.

5. PROVIDE 4" VENT TO EXTERIOR FOR DRYER AT STORAGE ROOM #19. SEE ALSO SHEETS E1 & P1.

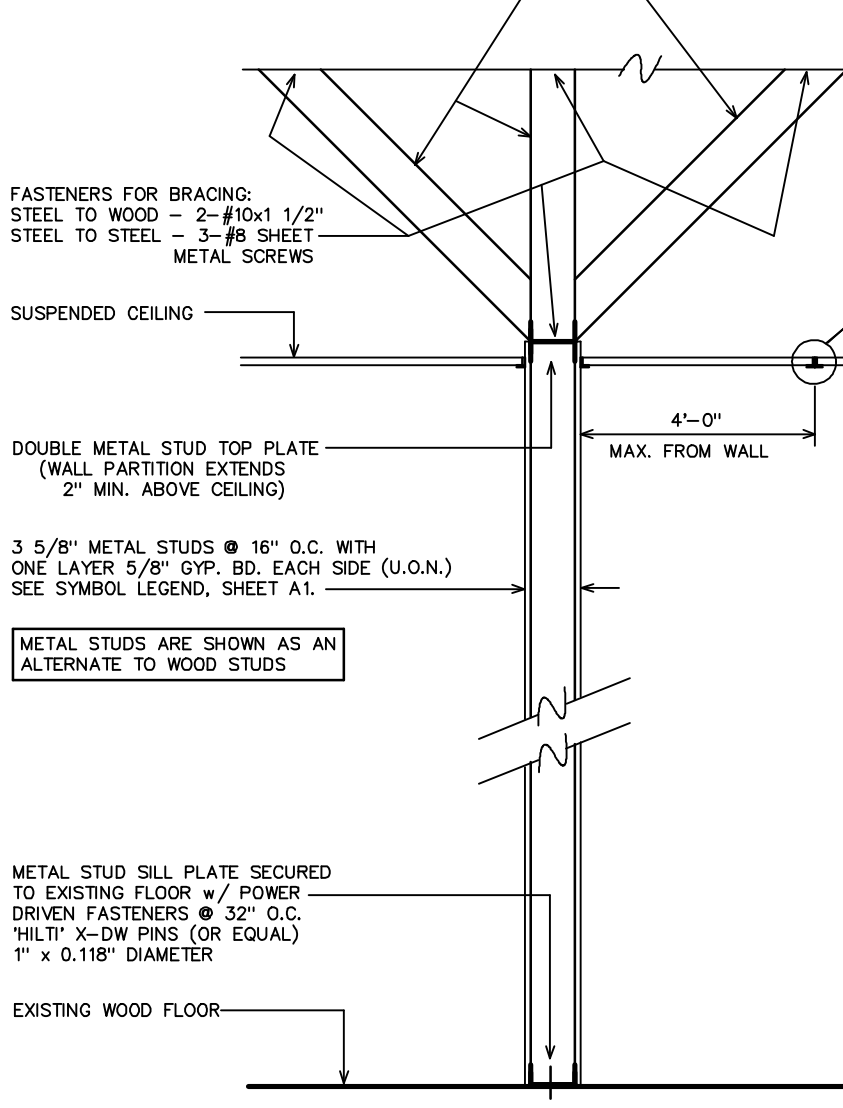
6. CONSULT w/ LOW-VOLTAGE SUPPLIER/CONTRACTOR REGARDING COOLING REQUIREMENTS FOR ROOM #4.



**LIGHT FIXTURE SUPPORT DETAIL**  
SCALE: 1/2" = 1'-0"

MODEL #	ALLOWABLE LENGTH
VSA 12	1'-6" TO 2'-6"
VSA 24	2'-6" TO 4'-0"
VSA 47	4'-0" TO 7'-0"
VSA 710	7'-0" TO 10'-0"
VSA 1012	10'-0" TO 12'-0"

EXTEND METAL STUD KICKERS AT 8'-0" O.C. TO EXISTING STRUCTURE ABOVE. IF DUCT WORK OR OTHER OBSTACLES ARE IN THE WAY USE 45° (MAX) DIAGONAL BRACING TO STRUCTURE ABOVE @ 8'-0" O.C. - BRACING TO BE 25 GA. METAL STUDS OR TRACKS - COPE FLANGE & BEND WEB FOR CONNECTION



**1 WALL ASSEMBLY DETAIL**  
SCALE: 1/2" = 1'-0"

### CEILING CONSTRUCTION

- CEILINGS IN ROOMS 1, 2, 4, 5, 8 & 19-23 & ALL CLOSETS & SOFFITS ARE TO BE GYPSUM BOARD. SEE SHEET ID-1.
- EXCEPT AS NOTED ABOVE, ALL CEILINGS ARE TO BE SUSPENDED LAY-IN SYSTEM. FRAMING SHALL COMPLY w/ ASTM C-635. MATCHING WALL MOULDING SHALL DETACHABLY SUPPORT FRAMING. INSTALLATION SHALL COMPLY WITH ASTM C-636. FOLLOW MFR'S SPECIFICATIONS AND SEE ALSO SUSPENDED CEILING SUPPORT DETAIL ON THIS SHEET.

MATERIAL SPECIFICATIONS & INSTALLATION REQUIREMENTS SHALL MEET ALL APPLICABLE CODES. MORE SPECIFICALLY, 1) GRID MATERIALS SHALL BE "HEAVY DUTY" AS NOTED BELOW. 2) MATERIALS & INSTALLATION TO BE COMPATIBLE w/ SEISMIC CATEGORY D, E & F (ASCE) AND SEISMIC ZONES 3-4; 3) WALL ANCHORS, IN LIEU OF THEM BEING 2", MAY BE 1" ANCHORS WITH SEISMIC CLIPS USED TO SECURE THE GRID MEMBERS TO THE ANGLE [SEE DETAIL "2" BELOW LEFT "SUSPENDED CEILING SUPPORT DETAIL" AND THE MANUFACTURER'S LITERATURE FOR THE U.S.G. "ACM7 SEISMIC CLIP"]; 4) FOR ADDITIONAL REQUIREMENTS, SOME OF WHICH ARE OUTLINED ABOVE, SEE ASCE-7, SEC. 13.5.6.2.2.

EXCEPT WHERE RIGID BRACES ARE USED TO LIMIT LATERAL DEFLECTIONS, CEILING PENETRATIONS INCLUDING SPRINKLER HEADS SHALL BE PROVIDED WITH A 2" OVERSIZE RING, SLEEVE OR ADAPTER TO ALLOW FOR FREE MOVEMENT OF AT LEAST 1" IN ALL HORIZONTAL DIRECTIONS.

CHANGES IN CEILING PLANE SHALL BE PROVIDED WITH POSITIVE BRACING.

CABLE TRAYS AND ELECTRICAL CONDUITS SHALL BE SUPPORTED INDEPENDENTLY FROM THE CEILING.

NOTE: GRID ORIGIN DIMENSIONS ON PLAN.

SUSPENSION SYSTEM: ARMSTRONG REGULAR LAY-IN-T-BAR w/ 9/16" SUPRAPHINE GRID (WHITE) (GRID MEMBERS TO BE "HEAVY DUTY")

TILE: ARMSTRONG "ORRIS" 24"x24"x3/4" BEVELED REGULAR # 589 (WHITE)

- PROVIDE "SOLATUBE" MODEL #290-DS DAYLIGHTING SYSTEM WHERE SHOWN. PHONE: (800) 765-2882 INCLUDE "TIER-DROP" CEILING DIFFUSER
- CONTRACTOR TO PROVIDE ONE (1) FULL BOX OF EACH TYPE OF CEILING TILE FOR OWNER'S FUTURE USE.
- SEE NOTE ON THE TITLE SHEET (TS) RE: PENETRATIONS & FIRE RESISTIVE "HOODS" AT LIGHT FIXTURES.
- WHERE PARTIAL TILES ARE SHOWN (E.G., EDGES OF ROOM), TILES ARE TO HAVE A CUT REVEAL EDGE WHICH MATCHES THE WHOLE TILES.
- AT THE BEGINNING OF THE PROJECT, PRIOR TO FRAMING WALLS, ALL CEILING HEIGHTS ARE TO BE VERIFIED RELATIVE TO NEW & EXISTING PIPES, DUCTS, ETC. ARCHITECT TO BE NOTIFIED IMMEDIATELY IF SUFFICIENT SPACE IS NOT AVAILABLE FOR PROPOSED LIGHT FIXTURES & OTHER CEILING ELEMENTS.

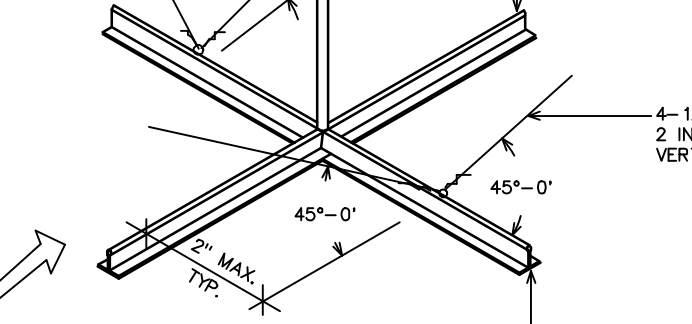
### GENERAL NOTES

- ADDITIONAL INFORMATION WILL BE FOUND ON THE ELECTRICAL DRAWINGS, SHEETS E1 AND E2
- SEE THE INTERIOR DESIGN DRAWING, SHEET ID1, FOR ADDITIONAL INFORMATION.

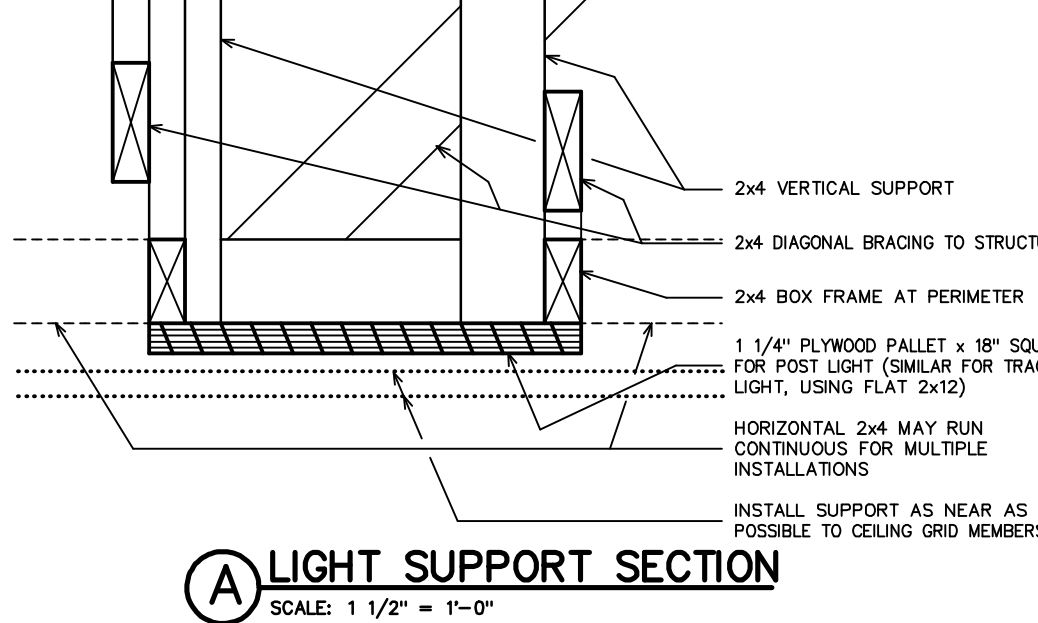
**SUPPORT FOR CEILING MTD. DENTAL LIGHT**

FURNISH 18"x18"x1 1/4" PLYWOOD PALLET IMMEDIATELY ABOVE CEILING SUSPENSION SYSTEM AS SHOWN ON PLAN. THESE SUPPORTS ARE TO BE FIRMLY SECURED TO THE CEILING STRUCTURE WITH DIAGONAL BRACING. THE SYSTEM MUST BE RIGID AND SUPPORT A 200 LB. LOAD (TYPICAL OF 6) SEE DETAIL 4/A2 AT RIGHT (OR AS PER MANUFACTURER'S RECOMMENDATIONS)

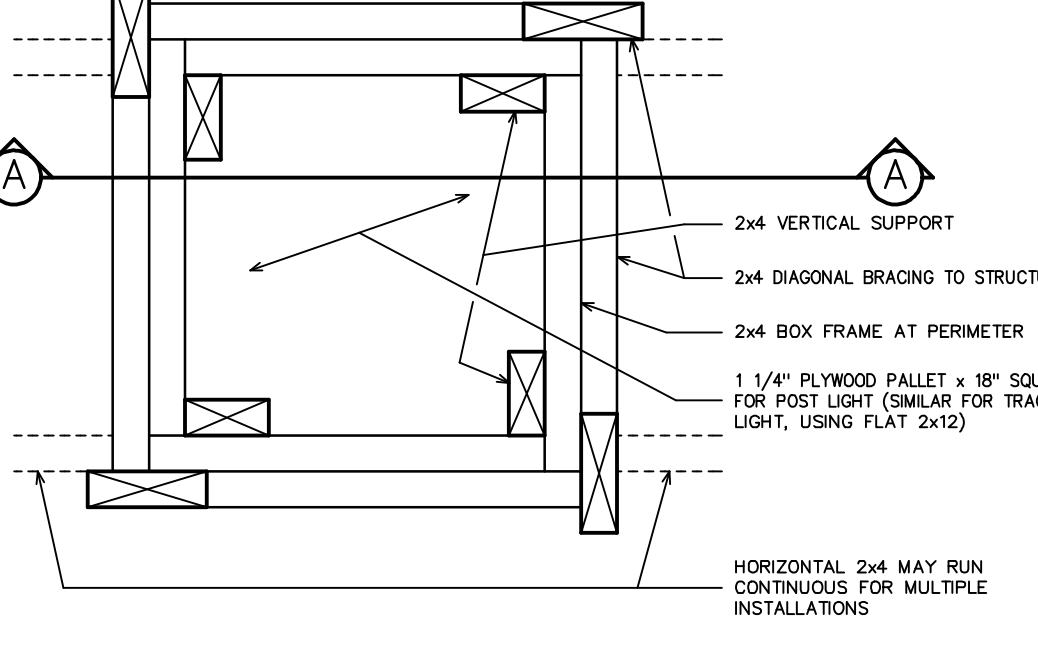
TRADE SIZE	ALLOWABLE LENGTH		
	EMT	IMC	RMC
1/2"	3'-10"	4'-4"	4'-4"
3/4"	5'-2"	5'-7"	5'-7"
1"	6'-6"	7'-0"	7'-0"
1 1/4"	8'-6"	9'-0"	9'-0"
1 1/2"	9'-10"	10'-5"	10'-5"
2"	13'-2"	13'-2"	13'-2"



**2 SUSPENDED CEILING SUPPORT DETAIL**  
SCALE: 1/2" = 1'-0"



**3 LIGHT SUPPORT SECTION**  
SCALE: 1/2" = 1'-0"



**4 CEILING MOUNTED DENTAL LIGHT SUPPORT (PLAN)**  
SCALE: 1/2" = 1'-0"

- ADDITIONAL INFORMATION WILL BE FOUND ON THE ELECTRICAL DRAWINGS, SHEETS E1 AND E2
- SEE THE INTERIOR DESIGN DRAWING, SHEET ID1, FOR ADDITIONAL INFORMATION.

### GENERAL NOTES

- ADDITIONAL INFORMATION WILL BE FOUND ON THE ELECTRICAL DRAWINGS, SHEETS E1 AND E2
- SEE THE INTERIOR DESIGN DRAWING, SHEET ID1, FOR ADDITIONAL INFORMATION.

**SUPPORT FOR CEILING MTD. DENTAL LIGHT**

FURNISH 18"x18"x1 1/4" PLYWOOD PALLET IMMEDIATELY ABOVE CEILING SUSPENSION SYSTEM AS SHOWN ON PLAN. THESE SUPPORTS ARE TO BE FIRMLY SECURED TO THE CEILING STRUCTURE WITH DIAGONAL BRACING. THE SYSTEM MUST BE RIGID AND SUPPORT A 200 LB. LOAD (TYPICAL OF 6) SEE DETAIL 4/A2 AT RIGHT (OR AS PER MANUFACTURER'S RECOMMENDATIONS)

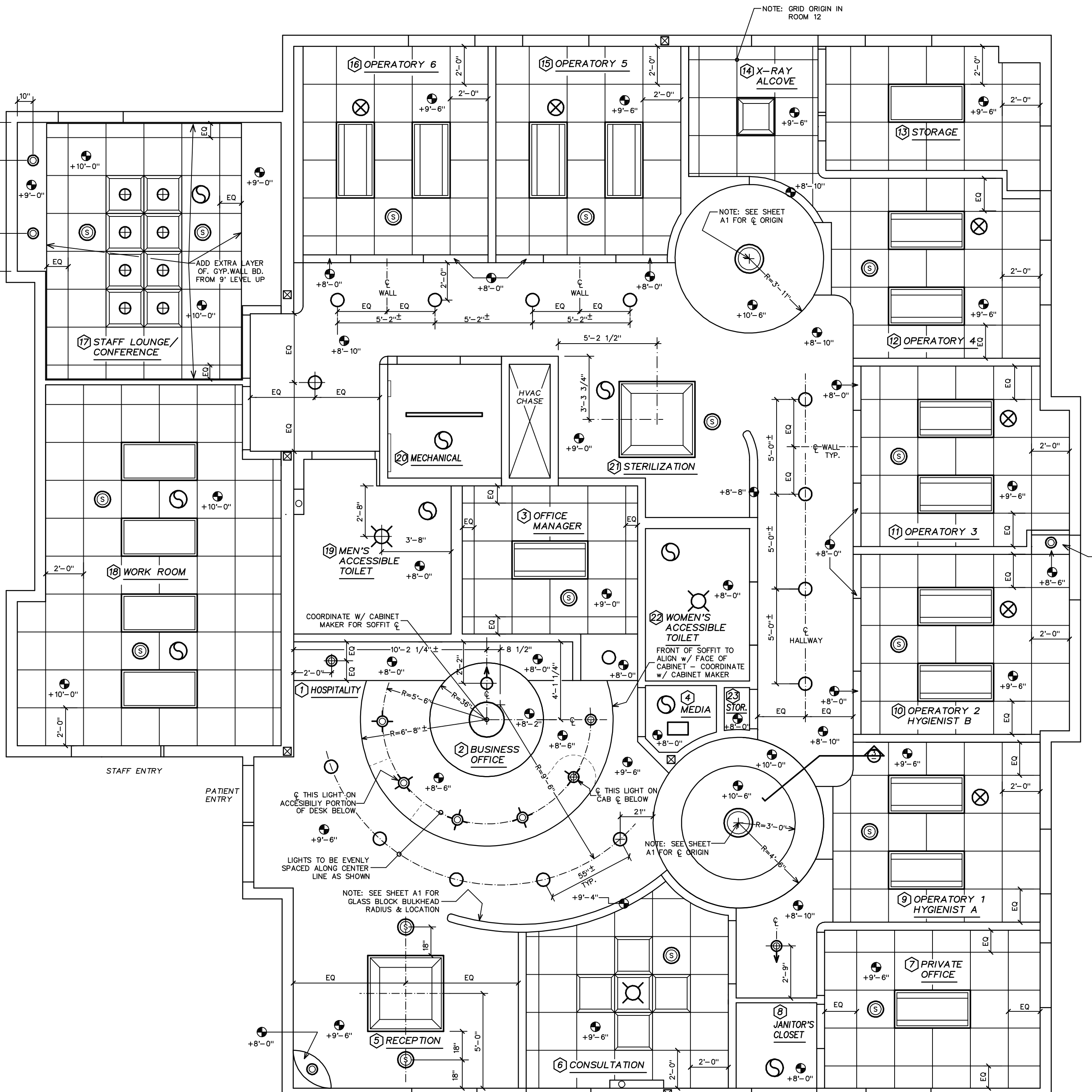
TRADE SIZE	ALLOWABLE LENGTH		
	EMT	IMC	RMC
1/2"	3'-10"	4'-4"	4'-4"
3/4"	5'-2"	5'-7"	5'-7"
1"	6'-6"	7'-0"	7'-0"
1 1/4"	8'-6"	9'-0"	9'-0"
1 1/2"	9'-10"	10'-5"	10'-5"
2"	13'-2"	13'-2"	13'-2"



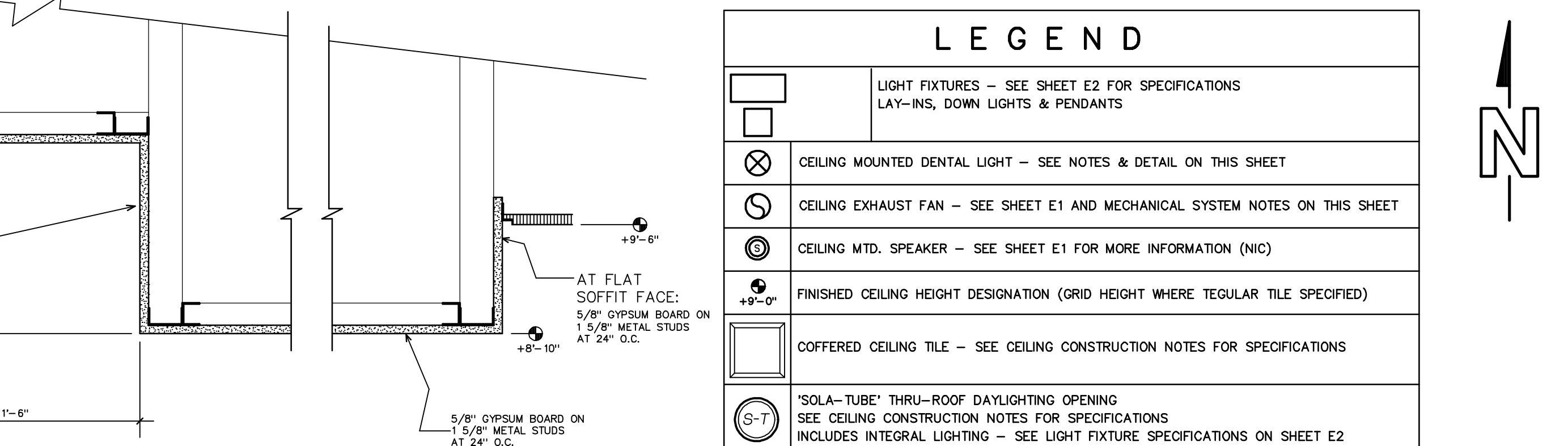
**2 SUSPENDED CEILING SUPPORT DETAIL**  
SCALE: 1/2" = 1'-0"

# REFLECTED CEILING PLAN

SCALE: 1/4" = 1'-0"



**REFLECTED CEILING PLAN**  
SCALE: 1/4" = 1'-0"



**LEGEND**  
SCALE: 1/2" = 1'-0"

REVISIONS BY

DESIGN FOR HEALTH

250 Dufour Street, Santa Cruz, CA 95060  
831.425.1869 Ph. • 831.425.3905 Fax • DesignForHealth.com

A PROSTHODONTIC DENTAL OFFICE FOR

STEVE LIM, DMD, FACCP

105 N. BASCOM AVE SUITE 200 SAN JOSE, CA 95128

DATE: 14 MAY, 13  
SCALE: AS NOTED  
DRAWN: MRE  
PROJECT: 20515  
SHEET: AR2