

LIGHTING SCHEDULE

SYMBOLS	QTY.	DESCRIPTION	MFR./NO.	LAMPS
	1	EXISTING SINGLE-TUBE FLOUORESCENT CEILING FIXTURE	EXISTING	EXISTING
	1	22" DIAMETER SEMI-RECESSED LUMINAIRE w/ ROUND OPAL DIFFUSER	FOCAL POINT LIGHTING "MONDANA" #FMN-SR-22-FC2240-120V -S-LB41-WH (w/ ELECTRONIC BALLAST)	1-F22/1-F40/RS (T-5 CIRCULAR LAMPS) INCLUDED w/ FIXTURE
	2	INDIRECT SKYLIGHT w/ LED DOWNLIGHTS	SOLATUBE "TIER-DROP" w/ SMART LED OPTION 17 WATT SYSTEM INCLUDES LIGHT SENSOR SWITCH	4 LED LAMPS 17 WATTS TOTAL SP30 (INCLUDED w/ FIXTURE)
	1	2x4" LAY-IN FLOUORESCENT FIXTURE DIRECT/INDIRECT DIFFUSER	FOCAL POINT "SKY-2x2" FSK-22-B-4-T5HO-S-G-PS-DW-WH w/ ELECTRONIC BALLAST	4-F24/RS (T-5HO LAMPS) SP41 (G.E. OR EQUAL)
	2	4x4" LAY-IN FLOUORESCENT FIXTURE DIRECT/INDIRECT DIFFUSER	FOCAL POINT "SKY-4x4" FSK-44-B-8-T5-S-F-PS-NO-WH w/ ELECTRONIC BALLAST	8-F14/RS (T-5 LAMPS) SP41 (G.E. OR EQUAL)
	2	2x4" LAY-IN FLOUORESCENT FIXTURE DIRECT/INDIRECT DIFFUSER	FOCAL POINT "SKYLITE" FBX-24-B-2-TB-E-G-PS-NO-WH w/ ELECTRONIC BALLAST	2-F32/RS (T8-LAMPS) SP41 (G.E. OR EQUAL)
	12	2x4" LAY-IN FLOUORESCENT FIXTURE DIRECT/INDIRECT DIFFUSER	FOCAL POINT "SKYLITE" FBX-24-B-2-TB-E-G-PS-NO-WH w/ ELECTRONIC BALLAST	2-F32/RS (T8-LAMPS) SPX50 (G.E. OR EQUAL)
	1	2x4" LAY-IN FLOUORESCENT FIXTURE ACRYLIC PRISMATIC DIFFUSER	METALUX 2GPXR-440A w/ ELECTRONIC BALLAST	4-F32/RS (T8-LAMPS) SP41 (G.E. OR EQUAL)
	4	2x4" LAY-IN FLOUORESCENT FIXTURE ACRYLIC PRISMATIC DIFFUSER	METALUX 2GPXR-440A w/ ELECTRONIC BALLAST	4-F32/RS (T8-LAMPS) SPX50 (G.E. OR EQUAL)
	15	RECESSED L.E.D. DOWNLIGHT FIXTURE	HALO # H750ICAT-693WB	HALO ML-5606840 (9W - 4000K)
	6	RECESSED LOW VOLTAGE DOWNLIGHT FIXTURE	HALO # H1499T-1493	20W-MR16
	5	INCANDESCENT PENDANT CEILING FIXTURE (JUNCTION BOX FOR CEILING MOUNTED FIXTURE)	TECH LIGHTING "SARA GRANDE PENDANT" 700TDSARGP	60W MED. BASE BT15 LAMP
	2	RECESSED LOW VOLTAGE ADJUSTABLE 'EYEBALL' FIXTURE	HALO # H1499T-1496P	20W-MR16
	8	RECESSED FLOUORESCENT PARABOLIC DOWNLIGHT FIXTURE	EDISON PRICE LIGHTING #BFX-213/8-EOL-WF PROVIDE DIMMING BALLAST	2-13WF13TT SPX41 (G.E. OR EQUAL)
	7	JUNCTION BOX FOR WALL MOUNTED FIXTURE INSTALL J-BOX (VERIFY HT. w/ INT. DESGNER) (INSTALL FIXTURE SUPPLIED BY OTHERS)	BY INTERIOR DESIGNER	BY INTERIOR DESIGNER
	3	JUNCTION BOX FOR CEILING MOUNTED FIXTURE (INSTALL FIXTURE SUPPLIED BY OTHERS)	BY INTERIOR DESIGNER	BY INTERIOR DESIGNER
	APPROX. 45 LF	L.E.D. FLEXIBLE TAPE (FIELD VERIFY LENGTH) TAPE INSTALLED AS UNDER-CABINET LIGHT	GM LIGHTING (OR EQUAL) 12VDC WET LOCATION STANDARD OUTPUT FLEXIBLE L.E.D. LINEAR RIBBON LTR-300WP-S0-PW	1.52 WATTS PER FOOT 4200K
	1	CEILING MOUNTED UTILITY FIXTURE	AMERICAN FLOUORESCENT # CSS-20-22-ET	22W-FC8T9
	9	FLOUORESCENT EMERGENCY BALLASTS TO BE INSTALLED IN FIXTURES INDICATED AS SUCH (***)	LITHONIA LIGHTING AS APPROPRIATE FOR SPECIFIED LAMPS: P5P-500 OR P5S-1100 PSDL-1 OR PSDL-2	
	1	MASTER CONTROL SWITCH - PROVIDE SWITCH SO CLIENT CAN TURN OFF ALL LIGHTS FROM ONE LOCATION	SEE SHEET E1	
	-	CEILING EXHAUST FAN SEE SHEETS E1 AND A2	SEE SHEET A2	
	6	CEILING MOUNTED DENTAL LIGHT - SEE NOTES ON SHEET A2. FURNISH J-BOX ONLY (FIXTURE BY OTHERS)	FIXTURE BY OTHERS	BY OTHERS

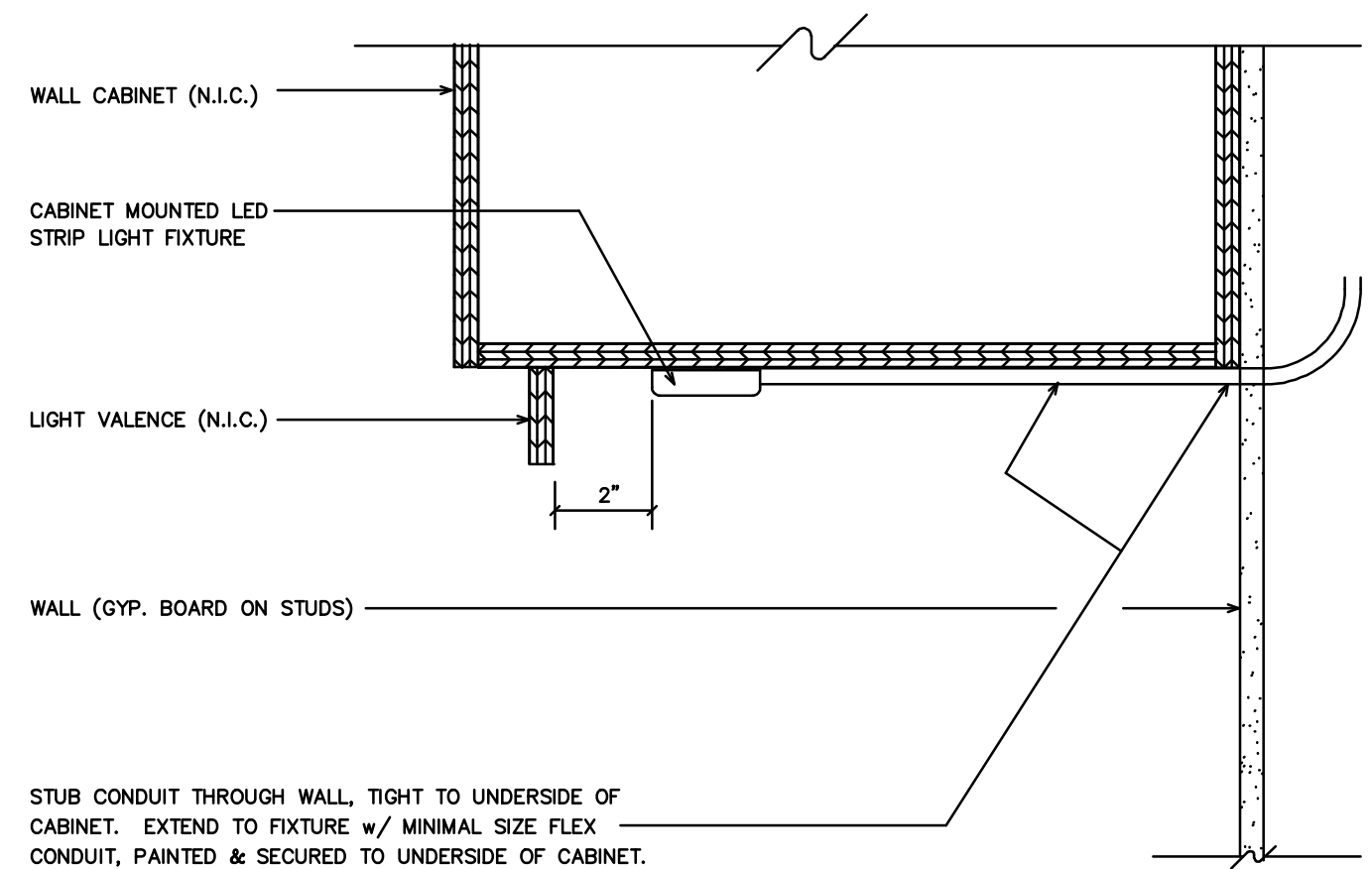
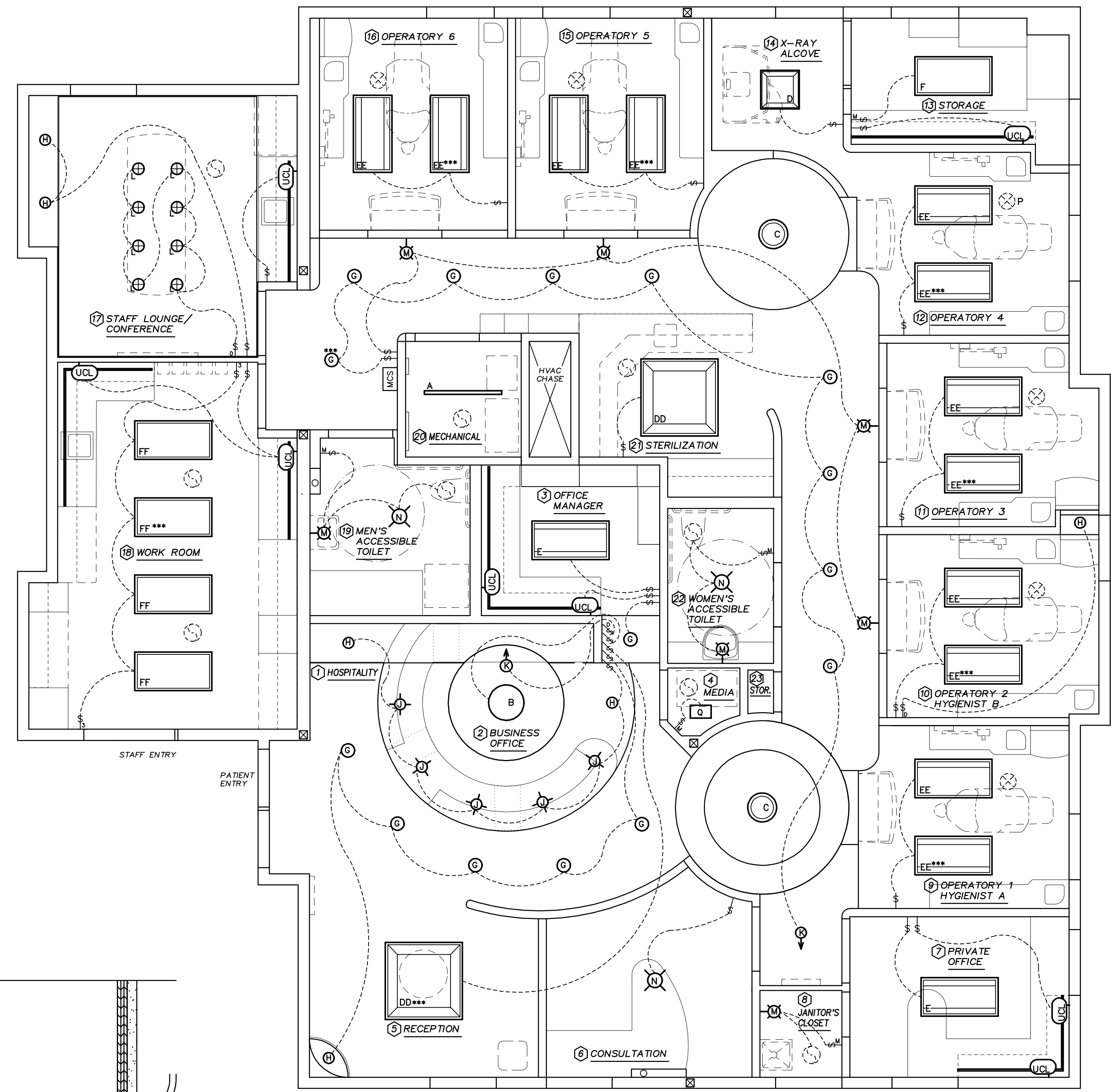
NOTE THAT SOME LIGHT SWITCHES, INDICATED THUS , ARE TO BE OPERATED BY MOTION DETECTORS
 NOTE THAT SOME LIGHT SWITCHES, INDICATED THUS , ARE TO BE OPERATED WITH DIMMING SWITCHES

GENERAL NOTES

- ALL WIRING SHALL BE CONCEALED. FURNISH ELECTRICAL CONDUIT AS REQUIRED BY CODE.
- ALL BIDDING CONTRACTOR'S SHALL VISIT THE SITE AND ACQUAINT THEMSELVES WITH THE EXISTING CONDITIONS.
- ALL FLOUORESCENT LIGHTING TO BE CIRCUITED SO THAT 50% OF THE TUBES CAN BE SWITCHED OFF AT ONE TIME.
- PROVIDE LOCK-OFF DEVICES FOR NIGHT LIGHT, FIRE ALARM AND/OR OTHER CIRCUITS AS REQUIRED BY CODE.
- ALL APPLICABLE LIGHTING FIXTURES TO BE CERTIFIED PER CALIFORNIA TITLE 24, SECTION 2-5314-b.
- ALL APPLICABLE COMPONENTS TO BE U.L. LISTED OR EQUIVALENT.
- WHERE LIGHT FIXTURES ARE NOT SPECIFICALLY LOCATED BY DIMENSIONS, SCALE THEIR LOCATION FROM THE PLAN. SEE ALSO THE REFLECTED CEILING PLAN, SHEET A2, FOR REFERENCE POINTS.
- SEE REFLECTED CEILING PLAN, SHEET A2, FOR LOCATION OF OTHER CEILING ELEMENTS.
- ALL FLOUORESCENT FIXTURES TO BE FURNISHED w/ 'WATT MISER' BALLASTS
- UNDER CABINET LIGHTS NEAR SINKS TO BE ON GFI CIRCUITS.
- SEE NOTE ON THE TITLE SHEET (TS) RE: PENETRATIONS & FIRE RESISTIVE 'HOODS' AT LIGHT FIXTURES.
- PROVIDE MASTER CONTROL SWITCH SO THAT CLIENT CAN TURN OFF ALL LIGHTING CIRCUITS FROM ONE LOCATION. SEE ALSO SHEET E1.
- AS INDICATED ON THE LIGHTING SCHEDULE, SOME LIGHT SWITCHES ARE TO BE OPERATED BY MOTION DETECTORS OR DIMMERS, INDICATED THUS: or

LIGHTING PLAN

SCALE: 1/4" = 1'-0"



TASK LIGHT INSTALLATION DETAIL

N.T.S.

DESIGN FOR HEALTH
 250 Dufour Street, Santa Cruz, CA 95060
 831.425.1869 Ph. • 831.425.3905 Fax • DesignForHealth.com

A PROSTHODONTIC DENTAL OFFICE FOR
STEVE LIM, DMD, FACD
 105 N. BASCOM AVE SUITE 200
 SAN JOSE, CA 95128

DATE: 14 MAY, 13
 SCALE: AS NOTED
 DRAWN: MRE
 PROJECT: 20515
 SHEET:

