

PLUMBING LEGEND

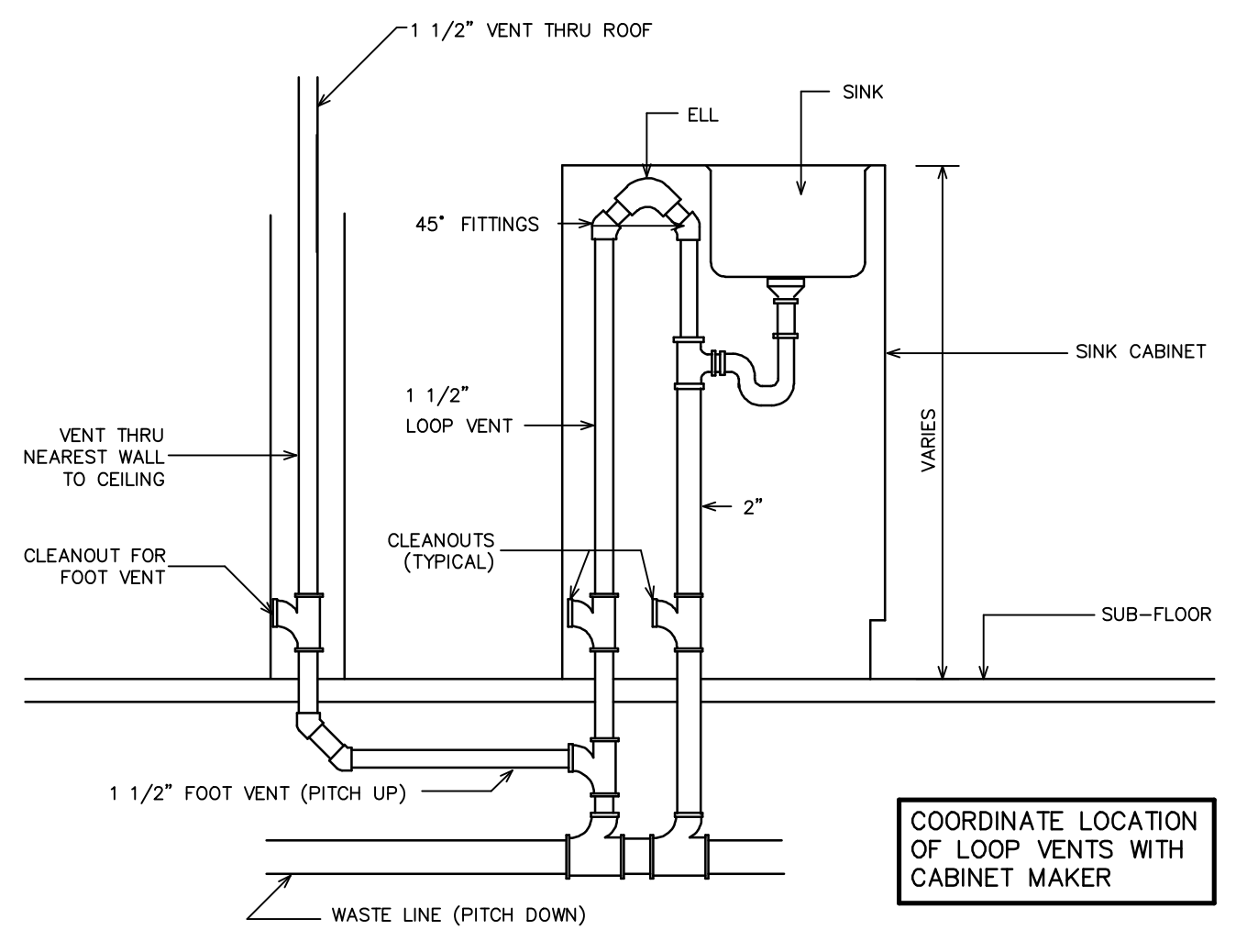
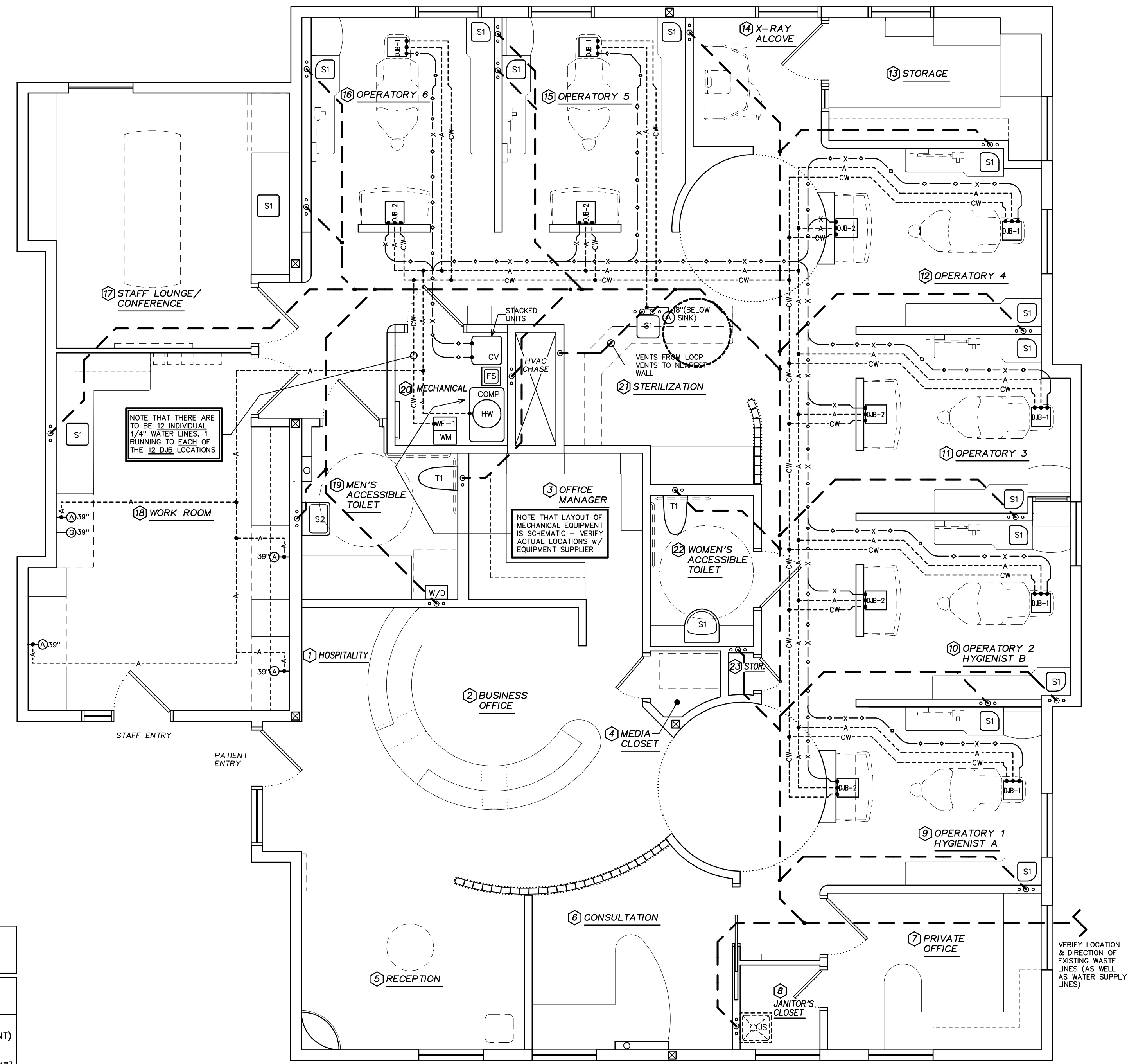
S1	SINKS AND FAUCETS - SEE THE SINK FIXTURE SCHEDULE ON THIS SHEET. CABINET MAKER TO MAKE COUNTER-TOP CUT-OUTS. PLUMBER TO PROVIDE FIXTURES & MAKE FINAL CONNECTIONS AND FURNISH DRAIN OUTLET, PERFORATED GRID STRAINER, TAIL PIECE, P-TRAP, SPEEDWAY STOPS & ALL NECESSARY TUBING.
S2	ACCESSIBLE LAVATORY & FAUCET - KOHLER WALL-HUNG KINGSTON LAVATORY #K-2005 w/ DELTA #501-WFHP FAUCET. INSTALL COMPLETE w/ CONCEALED ARM SUPPORTS, STOPS, TRAP & ALL ACCESSORIES. INSULATE WATER & WASTE LINES WHEN REQUIRED BY CODE. [LAV-GUARD #102 (WHITE) FROM TRUEBRO (800) 340-5969] - SEE ELEVATION B/A1
FS	FLOOR SINK - FURNISH AND INSTALL STANDARD DUAL-SINK (ZURN #Z-1901 OR EQUAL) w/ 2" WASTE AND VENT.
T1	ACCESSIBLE WATER CLOSET - TOTO WALL-HUNG DUAL-FLUSH ACCESSIBLE TOILET #CT-418-FG (1.6 & 0.8 GPF) w/ GROHE #38-749 FLUSHING SYSTEM & #38-771 AIR BUTTON. FURNISH & INSTALL WC UNIT WITH #SC-134 OPEN FRONT SEAT & COVER. SEE ELEVATION B/A1 & C/A1 REGARDING LOCATION.
JS	JANITOR'S FLOOR SINK & FAUCET - ROUGH-IN ONLY - PROVIDE DRAIN FOR FUTURE JANITOR'S SINK. VERIFY SIZE & LOCATION OF SINK & FAUCET
HW	ELECTRIC HOT WATER HEATER - FURNISH AND INSTALL 'STATE' ENERGY EFFICIENT MODEL # PV-30-10LS-F (30 GAL./240V). (TO BE MOUNTED ON SHELF ABOVE COMPRESSOR.) PROVIDE INSULATING BLANKET, OVERFLOW PAN/DRAIN & SEISMIC RESTRAINTS.
COMP	AIR COMPRESSOR - RUN TYPE 'L' COPPER PIPE AS SHOWN ON PLAN. TERMINATE AT COMPRESSOR WITH 1/2" F.P.A. THERE SHALL BE NO LEAKS DURING A 100 LB./48 HR. TEST BY PLUMBING CONTRACTOR PRIOR TO CLOSING ACCESS TO LINES. PROVIDE 2" FRESH AIR INTAKE PIPE FROM EXTERIOR (VERIFY LOCATION). SEE MFR'S SPECS FOR 'AIR STAR 50' BY AIR TECHNIQUES INC. (EQUIPMENT N.I.C.)
CV CV	CENTRAL VACUUM - RUN SCHEDULE 40 PVC AS SHOWN AND SIZED ON PLAN WITH LONG RADIUS FITTINGS (ALL FITTINGS ABOVE 1" TO BE OF DWI TYPE. WHERE DWI FITTINGS ARE NOT AVAILABLE, RIGHT ANGLE TURNS ARE TO BE MADE WITH SLOPED T's, Y's, DBL. 45'S) PROVIDE 1" IN 20' SLOPE BACK TO MECHANICAL ROOM. FURNISH 1/2" CW LINE w/ DBL. GATE VALVE (AT VACUUM AND FLOOR SINK) AND 2" VENT TO OUTSIDE. SEE MANUFACTURER'S SPECIFICATIONS FOR 'MOJAVE-V3' BY AIR TECHNIQUES, INC. (EQUIPMENT N.I.C.)
WM	WATER MANIFOLD - INSTALL VALVE (SUPPLIED BY OTHERS) ON CW SUPPLY LINE SERVING ALL COLD WATER CONNECTIONS (EXCEPT HOT WATER HEATER) THROUGHOUT THE SUITE. VALVE TO BE ACCESSIBLE FOR MANUAL OVERRIDE. SEE MFR'S SPECS FOR ADDITIONAL INFORMATION.
WF-1	WATER FILTER-1 - INSTALL UNIT (SUPPLIED BY OTHERS) ON CW SUPPLY LINES TO ALL DENTAL JUNCTION BOXES THROUGHOUT THE SUITE. (SEE NOTES ON PLAN AT THE MECHANICAL ROOM) SEE MFR'S SPECS FOR 'NISTA-CLEAR' SYSTEM FOR ADDITIONAL INFORMATION. NOTE THAT THERE ARE 12 SEPARATE WATER LINES (1/4" COPPER TUBING) RUNNING TO THE 12 D.B.J. LOCATIONS.
DB-1	DENTAL JUNCTION BOX-1 (SURFACE MOUNT ON FLOOR) - FURNISH 1" VACUUM BRANCH & 1/2" AIR LINE. JUNCTION BOX TO BE SUPPLIED AND INSTALLED BY DENTAL SUPPLIER. INSTALL 1/2" ANGLE STOP ON AIR LINE. TO BE LOCATED IN FIELD BY DENTAL EQUIPMENT SUPPLIER.
DB-2	DENTAL JUNCTION BOX-2 (IN BASE OF CABINET) - FURNISH 1" VACUUM BRANCH & 1/2" AIR LINE IN BASE OF CABINET BEING PROVIDED BY THE DENTAL EQUIPMENT SUPPLIER. INSTALL 1/2" ANGLE STOP ON AIR LINE. SEE EQUIPMENT CUT-SHEETS FOR EXACT LOCATION.
⊙ ⊙	AIR AND GAS WALL VALVES - STUB OUT AIR & GAS LINES FROM WALL AND FINISH WITH M.P.T. INSTALL VALVES SUPPLIED BY EQUIP. SUPPLIER.
MT	MODEL TRIMMER - RUN 1/2" C.W. LINE AND FINISH WITH CHROME PLATED SHUT-OFF VALVE AT 43" A.F.F. (EQUIPMENT N.I.C.)
⊕ ⊕	LOOP VENT - INSTALL LOOP VENT TO FIT WITHIN SINK CABINET. SEE DETAIL, THIS SHEET AND COORDINATE WITH CABINET MAKER.
W/D	WASHER/DRYER UNIT (STACKED) - PROVIDE HOT & COLD WATER SUPPLY LINES & WASTE LINE. UNITS SUPPLIED & INSTALLED BY OTHERS. SEE MFR'S SPECIFICATIONS.

GENERAL NOTES

- OBTAIN ALL PERMITS AND PAY ALL FEES FOR THIS PORTION OF THE WORK. FEES NOT TO BE INCLUDED IN CONTRACT PRICE BUT REIMBURSED DIRECTLY BY THE CLIENT. NOTE THAT ANY ADDITIONAL DRAWINGS, DIAGRAMS OR OTHER INFORMATION REQUIRED FOR A PERMIT SHALL BE PROVIDED BY THE PLUMBING SUBCONTRACTOR AND INCLUDED IN THE BID PRICE. IF THE BUILDING DEPARTMENT REQUIRES PROFESSIONALLY ENGINEERED DRAWINGS, THE COST FOR THESE SHALL BE PAID DIRECTLY BY THE CLIENT.
- ALL WORKMANSHIP, MATERIALS AND TESTS SHALL CONFORM TO ALL APPLICABLE RULES CODES, AND ORDINANCES.
- BIDDING CONTRACTORS SHALL VISIT THE SITE AND ACQUAINT THEMSELVES WITH ALL EXISTING CONDITIONS THAT PERTAIN TO THE PLUMBING INSTALLATION.
- WATER LINES ARE TO BE TYPE L COPPER. CLEAR LINES PRIOR TO EQUIP. INSTALLATION. ALL COLD WATER LINES (EXCEPT TO HOT WATER HEATER) THROUGHOUT THE SUITE ARE TO BE ROUTED THROUGH THE WATER MANIFOLD VALVE, AS INDICATED ON THE LEGEND.
- UNLESS NOTED OTHERWISE ALL PLUMBING LINES ARE TO BE CONCEALED.
- UNLESS NOTED OTHERWISE THE INSTALLATION OF DENTAL EQUIPMENT IS NOT IN THIS CONTRACT.
- PLUMBER IS RESPONSIBLE FOR PROVIDING ALL FIXTURES & FAUCETS, AS WELL AS INSTALLATION & HOOK-UP. IT SHOULD ALSO BE NOTED THAT FIXTURES GOING INTO CABINETS ARE SPECIFIED ON THIS DRAWING. CABINET MAKER TO PROVIDE ALL NECESSARY CUTOUTS. COORDINATE WORK WITH CABINET MAKER.
- DOMESTIC WATER SUPPLY SYSTEM TO BE LAID OUT BY PLUMBING CONTRACTOR. THIS DRAWING SHOWS ONLY THE COLD WATER SUPPLY LINES TO THE DENTAL JUNCTION BOXES.
- PLUMBING CONTRACTOR TO RECEIVE A SET OF CABINET DRAWINGS FROM THE GENERAL CONTRACTOR. THESE SHALL BE USED TO ACCURATELY LOCATE ALL PLUMBING FIXTURES & LINES IN THE WALLS & CABINETS. A LIGHT DOTTED LINE (.....) ON THIS DRAWING INDICATES THE EDGE OF A CABINET AND IS INTENDED TO BRING AN AREA OF POTENTIAL CONFLICT TO THE CONTRACTORS' ATTENTION.
- SEE NOTE ON THE TITLE SHEET (TS) RE: PENETRATIONS.
- WHERE DRAIN & SUPPLY LINES ARE EXPOSED UNDER SINKS & LAVATORIES, PROVIDE SHIELDING & INSULATION AS REQUIRED: 'LAV-GUARD #102 (WHITE) FROM TRUEBRO (800) 340-5969

PLUMBING PLAN

SCALE: 1/4" = 1'-0"



1 LOOP VENT DETAIL
SCALE: 1" = 1'-0"
"DFH" REP. TO ASSIST IN DETERMINING EXACT LOCATION OF LOOP VENT AT THE JOB SITE

CABINET SINK FIXTURE SCHEDULE

ROOM #	ROOM NAME	QTY.	SPECIFICATION
9	OPERATORY #1	2	ELKAY #ELU-1111 STNL. STL. SINK (UNDERMOUNT) w/ DELTA #570LF-WF S.L. FAUCET PROVIDE A 'TAPMASTER' PEDAL VALVE #1750 [FROM INTEGRA DYNAMICS, INC. (800) 791-8117]
10	OPERATORY #2	2	
11	OPERATORY #3	2	
12	OPERATORY #4	2	
15	OPERATORY #5	2	
16	OPERATORY #6	2	
17	KITCHENETTE	1	ELKAY #ELUHAD-1316 STNL. STL. SINK (5 1/2" DEEP) - UNDERMOUNTED w/ DELTA #472 S.L. PULL-OUT FAUCET/SPRAY
18	LAB	1	ELKAY #ELU-1316 STNL. STL. SINK (UNDERMOUNT) w/ DELTA #472 S.L. PULL-OUT FAUCET/SPRAY
21	STERILIZATION	1	ELKAY #ELU-1316 STNL. STL. SINK (UNDERMOUNT) w/ DELTA #472 S.L. PULL-OUT FAUCET/SPRAY AND GUARDIAN EQUIPMENT DECK MOUNTED EYE WASH #50226SDH-LC PROVIDE A 'TAPMASTER' PEDAL VALVE #1750 [FROM INTEGRA DYNAMICS, INC. (800) 791-8117]
22	TOILET ROOM	1	AMERICAN STANDARD #0960.001 'MEZZO' SEMI-COUNTERTOP SINK w/ AMERICAN STANDARD "CERAMIX" S.L. FAUCET #2000.101X

NOTE THAT LAYOUT OF MECHANICAL EQUIPMENT IS SCHEMATIC - VERIFY ACTUAL LOCATIONS w/ EQUIPMENT SUPPLIER

NOTE THAT LAYOUT OF ALL PLUMBING PIPES IS SCHEMATIC AND MUST BE VERIFIED RELATIVE TO FIELD CONDITIONS.

AS VACUUM LINE SIZES ARE A FUNCTION OF THE FINAL LAYOUT, THESE SIZES MUST BE VERIFIED w/ EQUIPMENT SUPPLIER

PIPE SCHEDULE

---	SANITARY WASTE LINE
-(BELOW FLOOR)-	VACUUM BRANCH LINE - SCHEDULE 40 PVC (SIZES MUST BE VERIFIED RELATIVE TO FINAL LAYOUT)
-----CW-----	COLD WATER BRANCH LINE - 1/4" COPPER TUBING SHOWN TO DENTAL JUNCTION BOXES ONLY
-----A-----	COMPRESSED AIR LINE - 1/2" COPPER

VERIFY WHETHER PLASTIC PIPE IS ALLOWED BY CODE FOR VACUUM OR IF COPPER MUST BE USED

VACUUM LINE SIZES FOR THE SPECIFIED DRY VACUUM SYSTEM COULD NOT BE CONFIRMED. THESE SIZES MUST BE CONFIRMED WITH THE DENTAL EQUIPMENT SUPPLIER.

DESIGN FOR HEALTH
250 Dufour Street, Santa Cruz, CA 95060
831.425.1869 Ph. • 831.425.3905 Fax • DesignForHealth.com

A PROSTHODONTIC DENTAL OFFICE FOR
STEVE LIM, DMD, FACD
105 N. BASCOM AVE SUITE 200 SAN JOSE, CA 95128

DATE: 14 MAY, 13
SCALE: AS NOTED
DRAWN: MRE
PROJECT: 20515
SHEET: P1